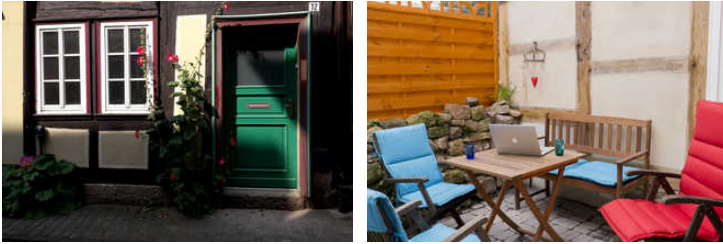


# Ferienhaus/Ferienwohnung Radbrunnenhaus

Holiday Chalet

Hann. Münden



## Description

---

The Radbrunnenhaus

On the edge of the historic old town of Hann. Münden, in a quiet little side street, you will find our unusual, lovingly renovated half-timbered holiday home, which will surprise you with its many wonderful structural details.

The half-timbered house, built in the 16th century, was completely gutted in 2015-17 and lavishly renovated, partly according to building biology aspects. Now the centuries-old beam structures are once again part of the interior and, with their pithy surfaces, tell stories of life in an ancient town. During the renovation period, we rediscovered and refurbished the original floorboards and tiling. Now modern living blends harmoniously with the existing architecture.

As a tenant, the whole house is at your disposal, where you can spend a weekend or even longer holidays with two to six people.

The house is only 3.60 metres wide but has about 110 square metres of living space spread over 4 levels. There are 3 bedrooms with double beds, two comfortably furnished bathrooms and an open-plan living-dining area with a high-quality equipped kitchen that takes up an entire floor. A small patio furnished with garden furniture invites you to relax, have breakfast or, on warm evenings, end a wonderful holiday day with a cool drink.

Rental is possible from 3 nights. Of course, you will find the beds made up. Towels, tea towels etc. are ready for you.

The Radbrunnenhaus is a non-smoking house.

Pets are not allowed in the house.

---

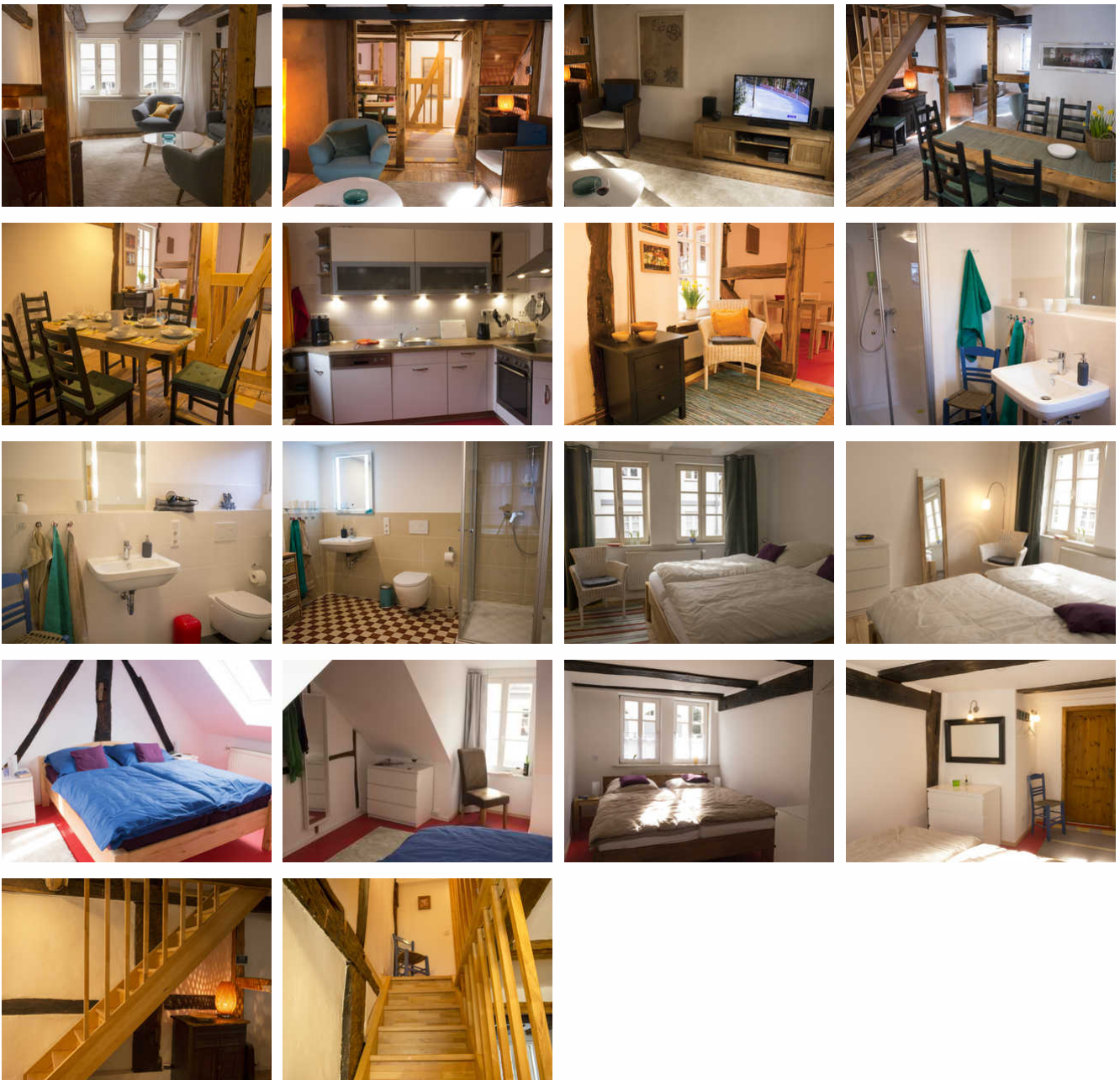
Last refurbishment: 2017

Languages: englisch, spanisch, deutsch

---

**4-room holiday home, 2 bathrooms, 4 floors (110 m<sup>2</sup>)**

---



The holiday home has been furnished and equipped by us in a modern and comfortable way. You live on four levels:

On the ground floor there is a comfortable guest bedroom with a double bed (1.60 m wide), 2 bedside tables with lamps, a chest of drawers with a large illuminated mirror, hook rail with hangers and space for your luggage. The visible ceiling beams give the room its special flair.

A large modern bathroom offers plenty of space for your utensils and towels. As a special extra, you will find an illuminated dressing table with a small armchair in front of it, shelves, magnifying mirror and a hairdryer.

In the large entrance hall with wardrobe and coat rack, you will find a small chamber with cleaning utensils, Hoover, iron, ironing board etc. In bad weather, you can also park 1-2 bicycles here.

At the back of the house, you will find the door to a small cosy courtyard, which invites you to chill out with lots of plants, garden furniture and nice details. If necessary, two bicycles can also be parked here.

The first floor is furnished without walls as an open living level and combines the living room, dining area and eat-in kitchen into a tastefully designed ensemble with many half-timbered details.

In the living room with a cosy seating set, you will find a large flat-screen TV and a stereo system. Lan in the living room, free W-Lan in the whole building.

The dining area for six people in the centre of the house invites you to share meals or play games. Accessories such as placemats and napkins can be found in the chests of drawers.

In the modern kitchen, there is also a small table for breakfast or "assistant cooks". The equipment here includes a fridge with freezer compartment, dishwasher, cooker with oven, various coffee and tea makers, hand mixer, toaster, kettle, crockery, cutlery and glasses, cooking pots cooking utensils, pans and a wok.

On the second floor, you will find another cosy guest bedroom with a double bed (1.80 m wide), armchair and chest of drawers, large standing mirror bedside tables and beautiful lighting.

On this level is the second comfortable bathroom with an illuminated mirror and beautiful bathroom objects.

From here you continue to the attic, which consists of a single guest bedroom. This unusual, sunny room with a newly built dormer offers a double bed (1.60 m wide), two bedside chests with lamps, an armchair and, like the other bedrooms, a chest of drawers and hook rail with hangers for your wardrobe.

All our rooms contain unusual and surprising details that point to the building history of the house, or that have been added by us.

The half-timbered house built in the 16th century was completely gutted in 2015-17 and lavishly renovated, partly according to building biology aspects. Now the centuries-old beam structures are once again part of the interior and, with their pithy surfaces, tell stories of life in an ancient town. The house is only 3.60 metres wide but has about 110 square metres of living space spread over 4 levels. There are 3 bedrooms with double beds, two comfortably furnished bathrooms and an open-plan living-dining area with a high-quality equipped kitchen that takes up an entire floor.

## Room amenities

---

Size: 110 qm

Max. occupancy: 6

Number of bedrooms: 3

Internet - WLAN: ja

Non-smoking: ja

Washing Machine: ja

### More details on pets

Pets not allowed

---

**General:** Double Bed, Heating, Non-smoking, Non-smoking House, Bicycle-friendly, Terrace, Hiking-friendly

---

**Outdoor Area:** Bicycle Storage Area

---

**Kitchen:** Baking Oven, Freezer Available, Refrigerator, Separate Kitchen, Dishwasher

---

**Sanitary Facilities:** Shower, Shower/WC, Hairdryer, Additional Bathroom

---

**Service:** Bed Linen, Towels, Pets not allowed, Tumble Dryer, Washing Machine

---

**Technical Equipment:** CD Player, Internet - LAN, Internet - WLAN, Cable/Satellite, Telephone, Flat-screen TV, Alarm

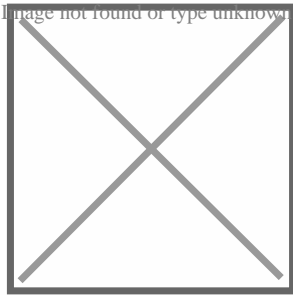
---

## General location details

---

The Radbrunnenhaus is located in a quiet side street in the historic town centre of Hann. Münden. Sights, restaurants, shops, pubs are all within walking distance, as are the train station, bus stops, pharmacies, doctors, etc.

You will find here a perfect starting point for nature and city holidays.



## Distances

---

Doctor: 500 m

Motorway: 8 km

Swimming area/waters: 300 m

Bakery: 200 m

Train station: 400 m

Cash dispenser/bank: 200 m

Bus stop: 100 m

Hospital/clinic: 2 km

(Spa)park/forest: 400 m

Cycle trail: 300 m

Restaurant: 200 m

Swimming/adventure pool: 2.5 km

Supermarket: 300 m

Tourist information: 200 m

Hiking trail: 400 m

Center: 10 m

Objekt ID: 82693